

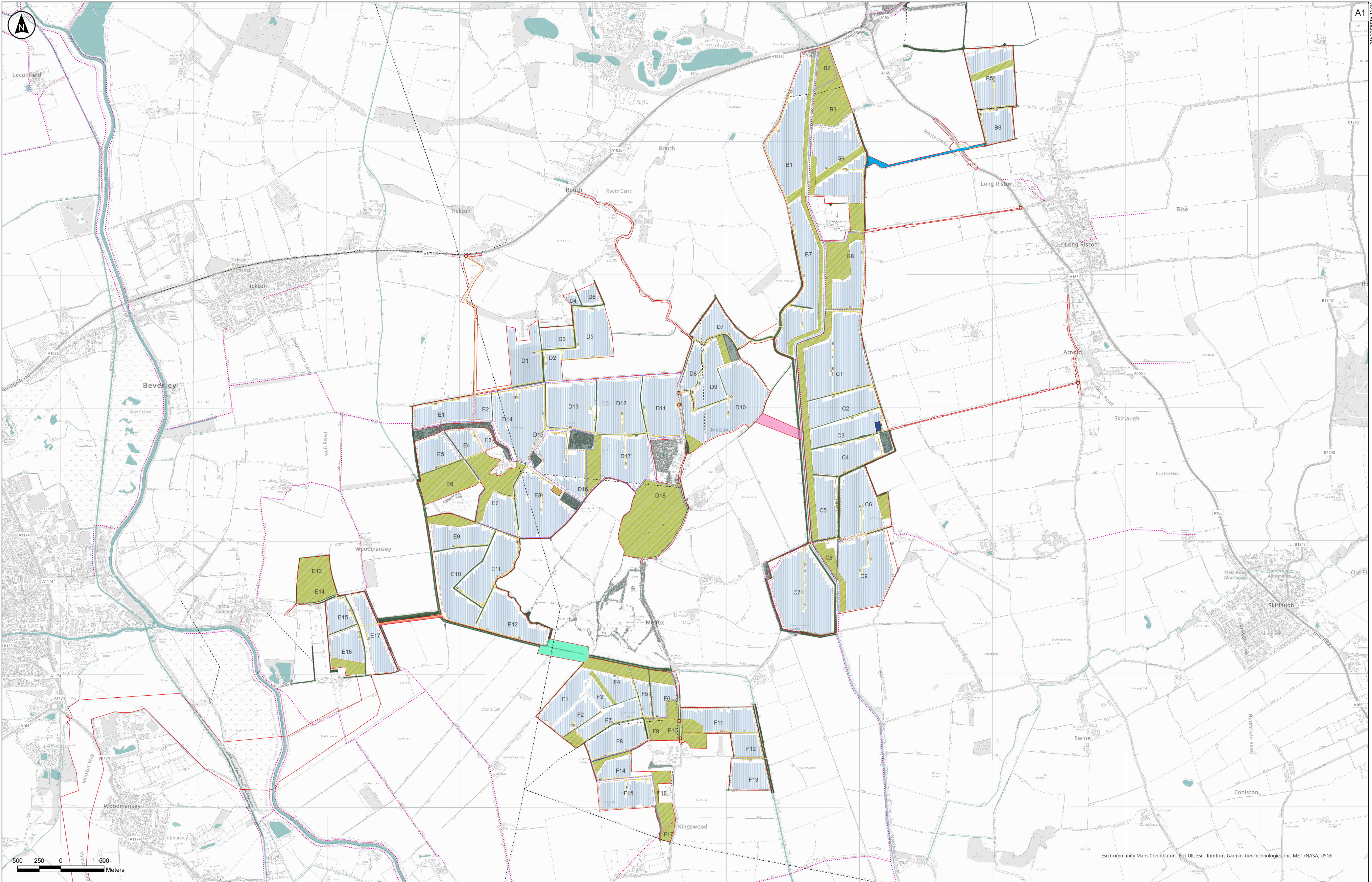
Peartree Hill Solar Farm


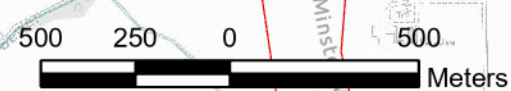

Environmental Statement

Volume 3

Figure 3.1 : Indicative Operational Layout Plan

Revision 4





Key

Order Limits

Powerlines and Pylons

Hedgerows

Woodlands/Trees

Waterbodies and Watercourses

Proposed Development

Operational Access Points

On-Site Substation East

On-Site Substation West

Hybrid Pack (Inverters, Converters and BESS Units)

Spares Containers

Switch Gear

Internal Access Tracks

Permissive Paths

Public Rights of Way

Fencing

Indicative Areas for Mitigation, Enhancement and/or Retained Agricultural Land

Field Reference

Solar PV Modules

Interconnecting Cabling Corridors between Land Areas:

Cable C-D

Cable B-B

Cable E-E


Cable E-F

The Base mapping is based upon Ordnance Survey (OS) data. Reproduced by permission of Ordnance Survey on behalf of HMSO. © Crown copyright and database rights 2025. Ordnance Survey AC000008122

Notes

1. This drawing is for illustrative purposes only.
2. The location of features shown are indicative only to show the key features of Peartree Hill Solar Farm for which development consent is sought.
3. The Indicative layout demonstrates one way that the Proposed Development could be undertaken within the parameters of the DCO [EN010157/APP/5.8], consent is not sought specifically for this layout.
4. Underground features (such as cables), joining bays, and boundary treatments (such as perimeter fencing and CCTV) are not shown.

Client



Project Name

Peartree Hill Solar Farm

Drawing Title

Environmental Statement Volume 3, Figure 3.1: Indicative Operational Layout Plan

Scale at A1

1:13,000

Status

DCO Application

Infrastructure Planning (Applications: Prescribed Forms and Procedure) Regulations 2009: 5(2)(a)

PINS Number

EN010157/APP/6/3

Coordinate System

British National Grid

Rev

P05